

# SPEC SHEET + MEASUREMENTS



## Red Kap® Industrial Work Pant. PT20

### Product photo



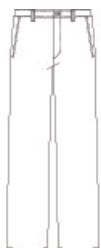
Our industrial-strength IL50 work pant has been tested through 50 industrial launderer washes, and the sharp, crisp look ensures employees have a professional image.

- 7.5-ounce, 65/35 poly/cotton twill with Touchtex PRO™ technology which provides breathable comfort lasting colors and stain resistance with an even softer feel
- TruBlack fabric resists fading wash after wash
- Requires minimal ironing thanks to a wrinkle-resistant finish
- Synthetic blend pocketing and waistband trim
- Heavy-duty brass ratcheting zipper, button closure
- Two front pockets
- Darts over hip pockets
- Two set-in hip pockets, left pocket has button closure
- Not all inseam lengths are available in every waist size. For a hem length shorter than what is shown online, please inquire for availability.
- Industrial laundry friendly

### CARE INSTRUCTIONS

Machine wash, tumble dry. Meets IL50 specifications.

### Sketches



front



back

# SPEC SHEET + MEASUREMENTS



Red Kap® Industrial Work Pant. PT20

## COLORS

---



Black  
PMS BLACK  
C



Charcoal  
PMS 7540C



Khaki  
PMS 2324C



Navy  
PMS 532C



Spruce Green  
PMS 5477C